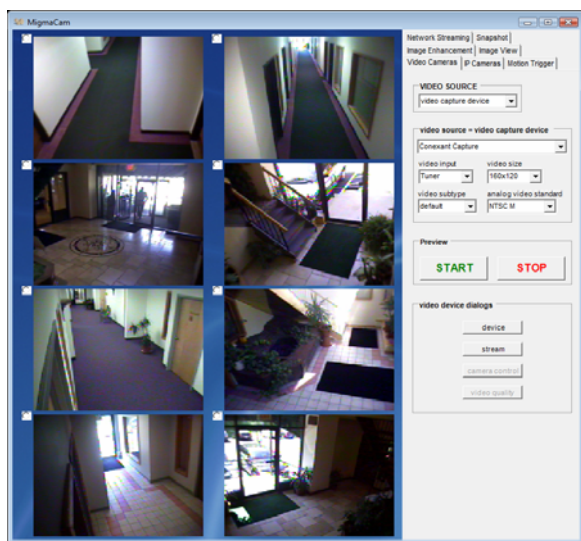




MigmaDVR™ for Unattended Security Surveillance



MigmaDVR™ is a sophisticated unattended security surveillance system bundled with

- ▲ 8 high resolution (540 TVL) IR LED cameras
- ▲ 8-channel video capture card
- ▲ Detection program using video cueing technologies
- ▲ Intelligent program for searching saved videos fast
- ▲ Preconfigured high-speed computer
- ▲ User guide and installation CD

MigmaDVR™ offers unique features for business surveillance applications such as

- ▲ Advanced analytical video cueing technologies
- ▲ Recording 10 image frames per second for each camera
- ▲ Images saved as movie clips for viewing
- ▲ Remote video streaming from each camera
- ▲ Daily email notification
- ▲ Saving images over 12 months in a typical PC hard drive
- ▲ Support of both wired and wireless (IP) cameras
- ▲ Intelligent video search software tool using object sizes



MigmaDVR™ surveillance camera has a high resolution and is suitable for the outdoor environment, 24/7. Its unique electronics design makes it sensitive to low light in the evening when IR LED is still off and produces clear pictures at night.

- ▲ Image Sensor - 1/3" Sony CCD Chip
- ▲ Pixels - NTSC: 510(H)×494(V) PAL: 500(H)×582(V)
- ▲ Horizontal Resolution - 540 TV lines
- ▲ Built-in Lens - 4mm
- ▲ LED Numbers / Wave Length - 24 LEDs and 850 nm
- ▲ IR Range - 100 ft (~30m) in total darkness
- ▲ Operating Temperature - -4 °F ~ 122 °F (-20 °C ~ 50 °C)
- ▲ Operating Humidity - 0% ~ 96%
- ▲ Power Requirement - 12VDC ± 10% (400mA)
- ▲ White Balance - 12VDC ± 10% (400mA)
- ▲ Dimension - 5.2"×2.8"×2.5"



Corporate Headquarters
Migma Systems, Inc.
1600 Providence Highway
Walpole, Massachusetts 02081

Contact Information
Web: <http://www.migmasys.com/MigmaDVR.html>
Sales: sales@migmasys.com
Support: support@migmasys.com

